

English

This half term we will be focusing on non-fiction writing. We will be learning to write a non-chronological report and leaflet both linked to our Geography learning. We will be reading our class text *The Explorer* by Katherine Rundell.



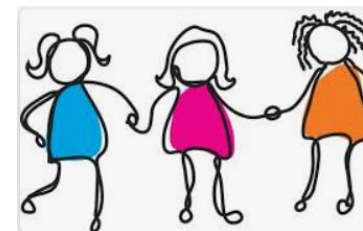
Mathematics

Children will be continuing to learn about fractions and complete new learning on money and time. Money will include converting between pounds and pence. In Time, we will be learning to tell the time to the nearest 5 and 1-minute on analogue and digital clocks. We will be continuing to learn our times tables and being able to recall these facts straight away in order to get higher scores on our MTC tests.



Physical, Social, Health Education (PSHE)

This half-term we will focus on relationships taught through Drama with Ceri. This will involve learning about feelings and how to express these appropriately, how to make and keep friends, respond appropriately whether we agree or disagree with others, how to celebrate our strengths and achievements and using techniques for resisting pressure to do things we aren't comfortable with.



Physical Education

The children will learn skills linked to tennis and rounders with Mr Goddard on a Wednesday. PE will be outside, wherever possible, so please make sure children are prepared for the weather. On Tuesdays, the children will also have PE lessons focussed on Dance.



Outdoor Learning

The children will develop a range of skills in Walt's Wood with Mrs Townend on a Wednesday. Children may bring spare shoes, e.g. wellington boots or walking boots, to wear for this. For the first few weeks, while the weather could still be wet, children may get muddy so spare clothes can also be worn!



PE Uniform

On PE days (Tuesday and Wednesday), children should come to school wearing their PE uniform. This includes: a plain navy-blue t-shirt with or without the school logo; plain black shorts, leggings or cycle shorts; plain black tracksuit bottoms; plain navy-blue sweatshirt and plain black trainers that are suitable for outdoor sport.

Please ensure uniform is clearly marked with the pupil's name.

Geography

This half term in Geography, we will be delving deeper into place knowledge. We will compare physical and human features of England and Egypt. We will understand geographical similarities and differences between the River Thames and the River Nile. We will look at how these aspects have changed over time. We will use aerial photos and maps to help with our study work.



Spanish

In Spanish, we will further our locational knowledge of Spain, learn more greetings and learn the names for pets and how to describe these.



	Shapes with curved lines	Shapes with straight lines
Pink Shapes		
Blue Shapes		

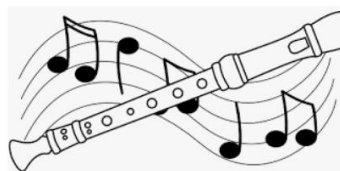
Computing

This half term we will be learning under the topic 'using data'. This will involve learning about Carroll diagrams, other sorting diagrams, how to input data into a spreadsheet and using images and text in sorting diagrams.



Religious Education

In RE, we will be exploring why festivals are so important to religious communities. We will find out how Easter, Diwali, Ramadan and Pesach are celebrated and look at symbols, sounds, actions, stories and rituals associated with these festivals.



Music

In music, we will be learning to play the recorder with Miss Allison.

Science

This half term in Science, the children will learn under the topic of 'animals including humans'. They will learn that animals need the right types and amount of nutrition and that they cannot make their own food. They will learn about animals that have skeletons and muscles and that these are for support, protection and movement.



Uniform Expectations

We will continue to uphold expectations for school uniform, including: A navy blue jumper or cardigan with or without the school logo; grey trousers, skirt or shorts; white or navy-blue polo shirt with or without the school logo; plain white, grey or black socks or plain grey tights; plain black pumps, trainers or school shoes for inside the school building and a sensible shoe or boot of their choice to play outdoors in.

Please ensure uniform is clearly marked with the pupil's name.